



The image is a stylized illustration. In the center, a white laptop is open, displaying a dark blue screen. On the screen, there is a light green icon of a school building with a triangular pediment and columns. Below the icon, the words "School Models" are written in a white, sans-serif font. A light blue horizontal bar is positioned below the text. The laptop is set against a background of a teal sky with white clouds and a dark blue city skyline with stylized buildings. The laptop itself is on a dark blue surface.

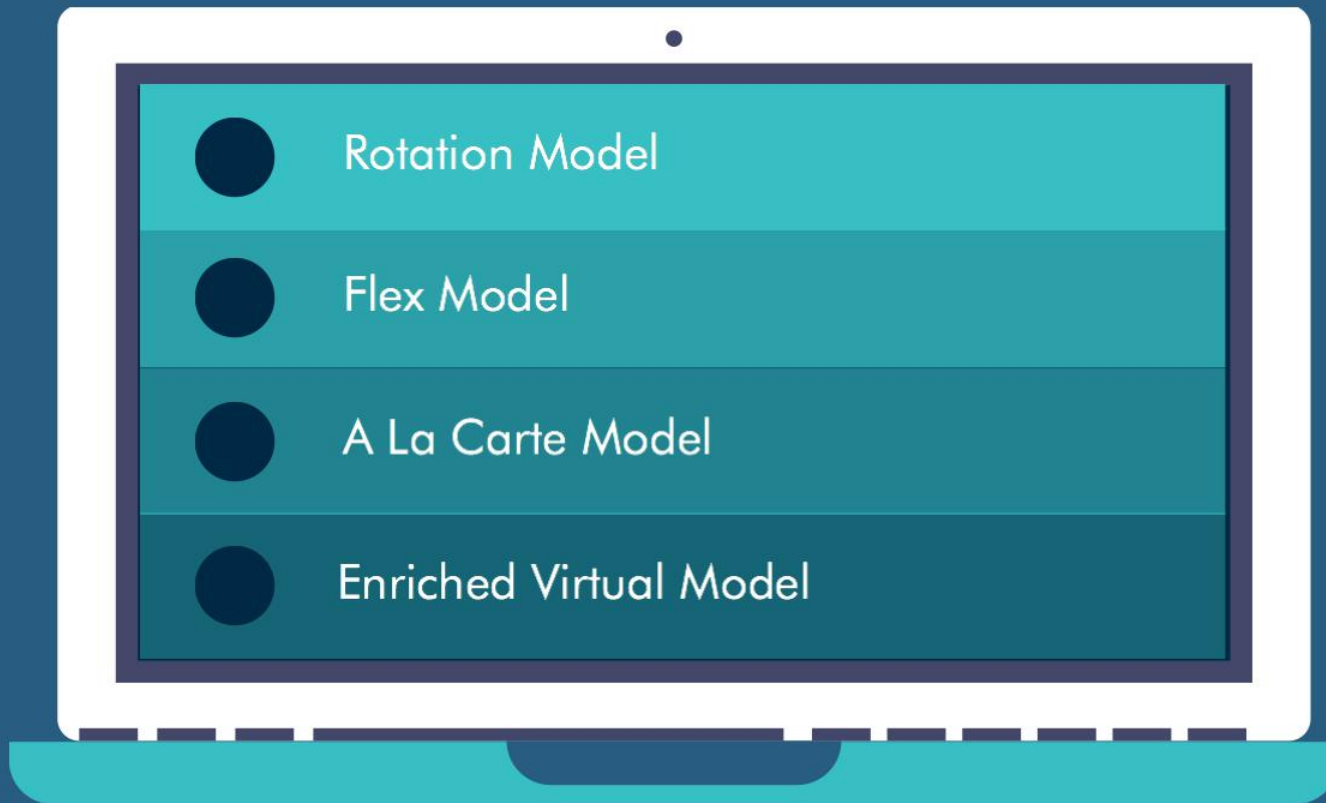
School Models

What is Blended Learning?



Blended learning is any time a student learns at least in part at a supervised brick-and-mortar location away from home and at least in part through online delivery with some element of student control over time, place, path, and/or pace.

4 Blended Learning Models



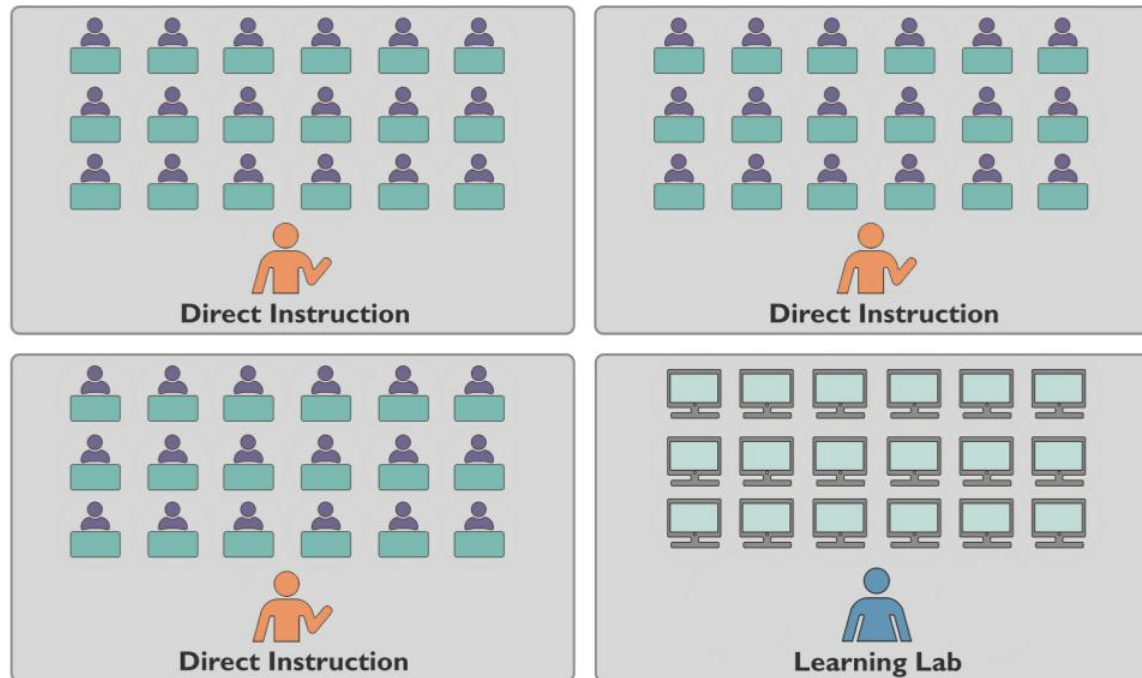
Let's explore each model!

Lab Rotation

Students rotate between direct instruction and online learning.



LAB ROTATION



Online
Learning



Offline
Learning



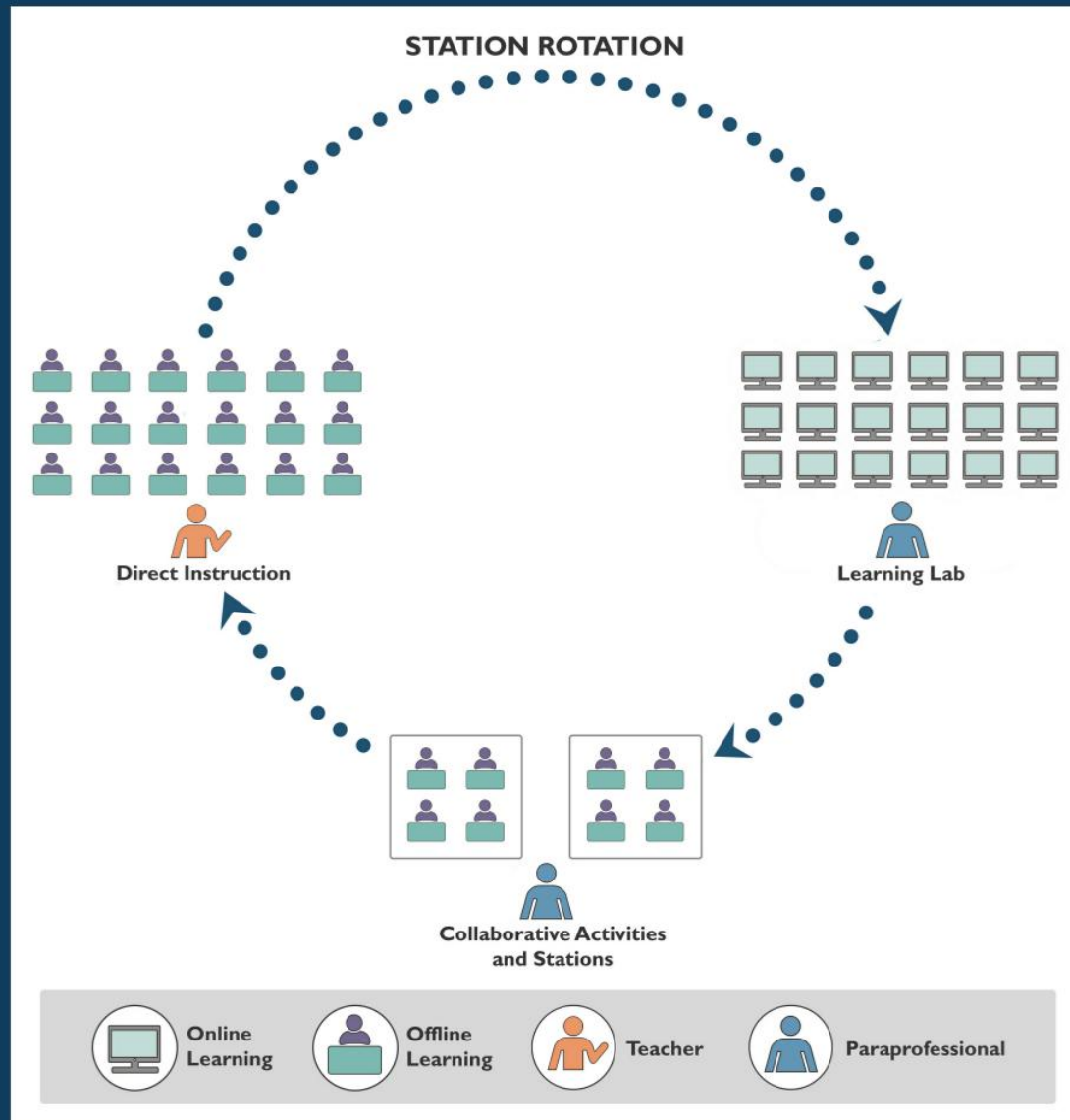
Teacher



Paraprofessional

Station Rotation

Students rotate between stations in one classroom.



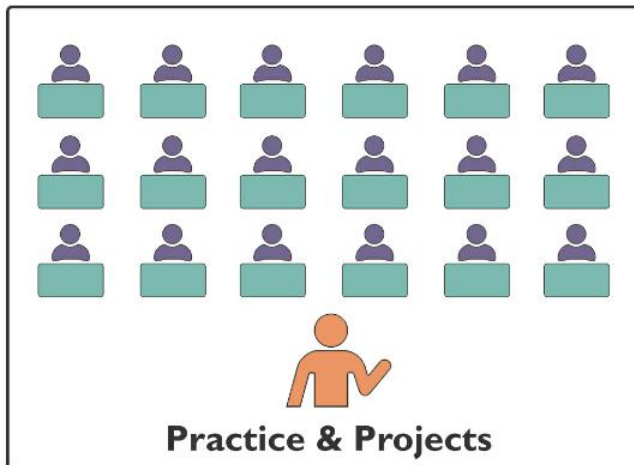
Flipped Classroom

Students access content and instruction online offsite and students get face-to-face guidance in the classroom.



FLIPPED CLASSROOM

School



Practice & Projects

Offsite



Online Content
& Instruction



Online
Learning



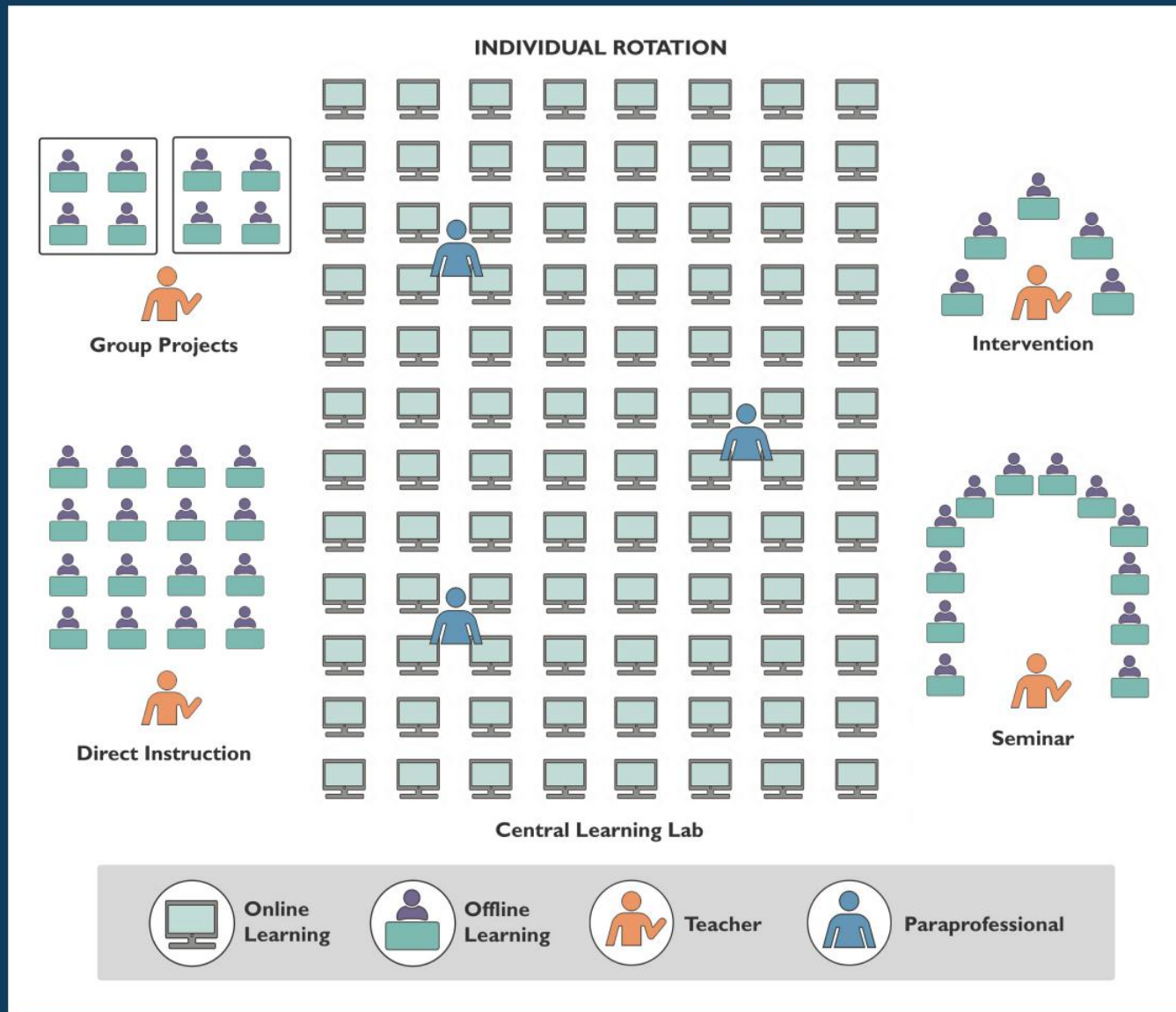
Offline
Learning



Teacher

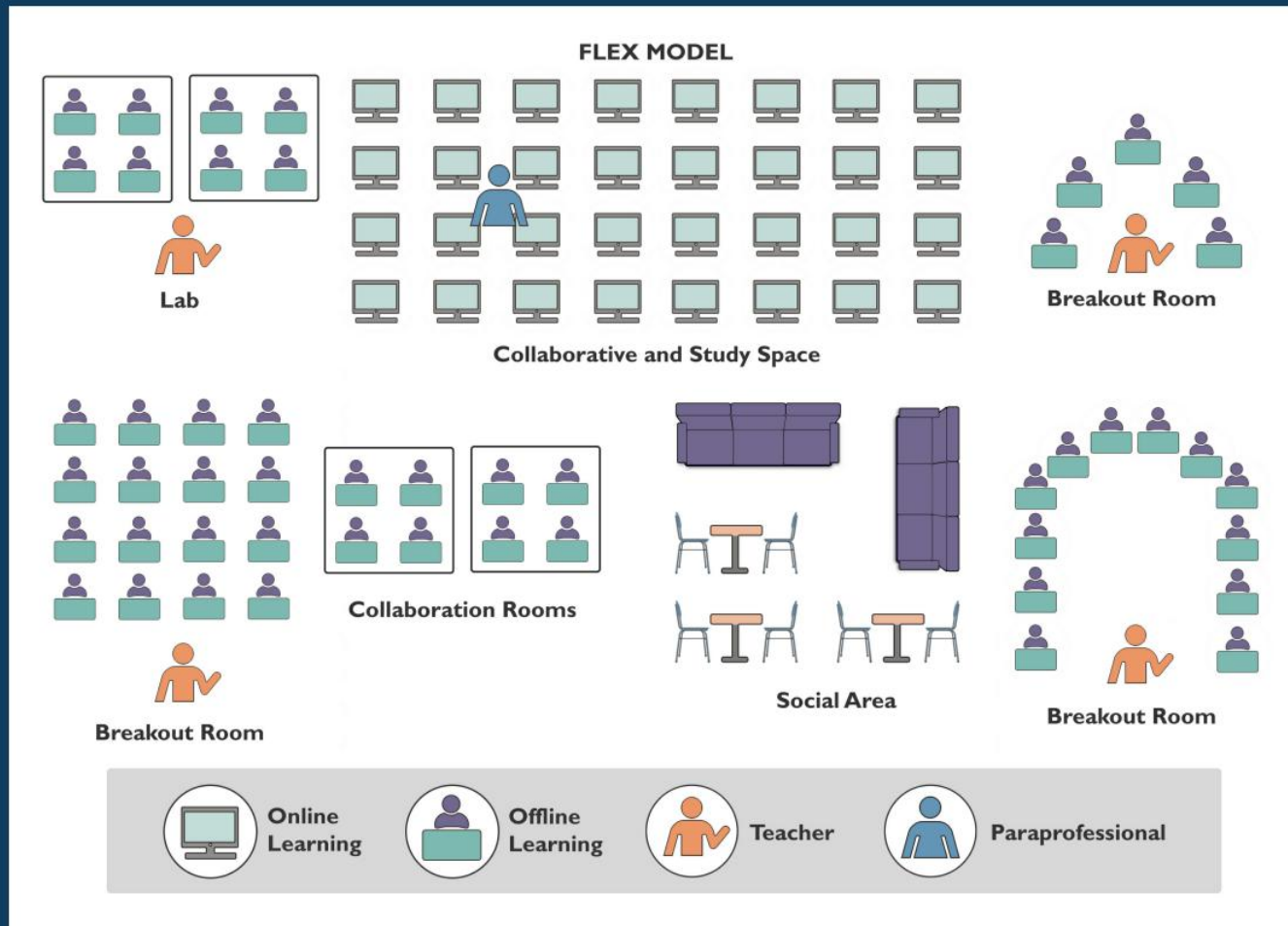
Individual Rotation

Students have their own individualized playlist.



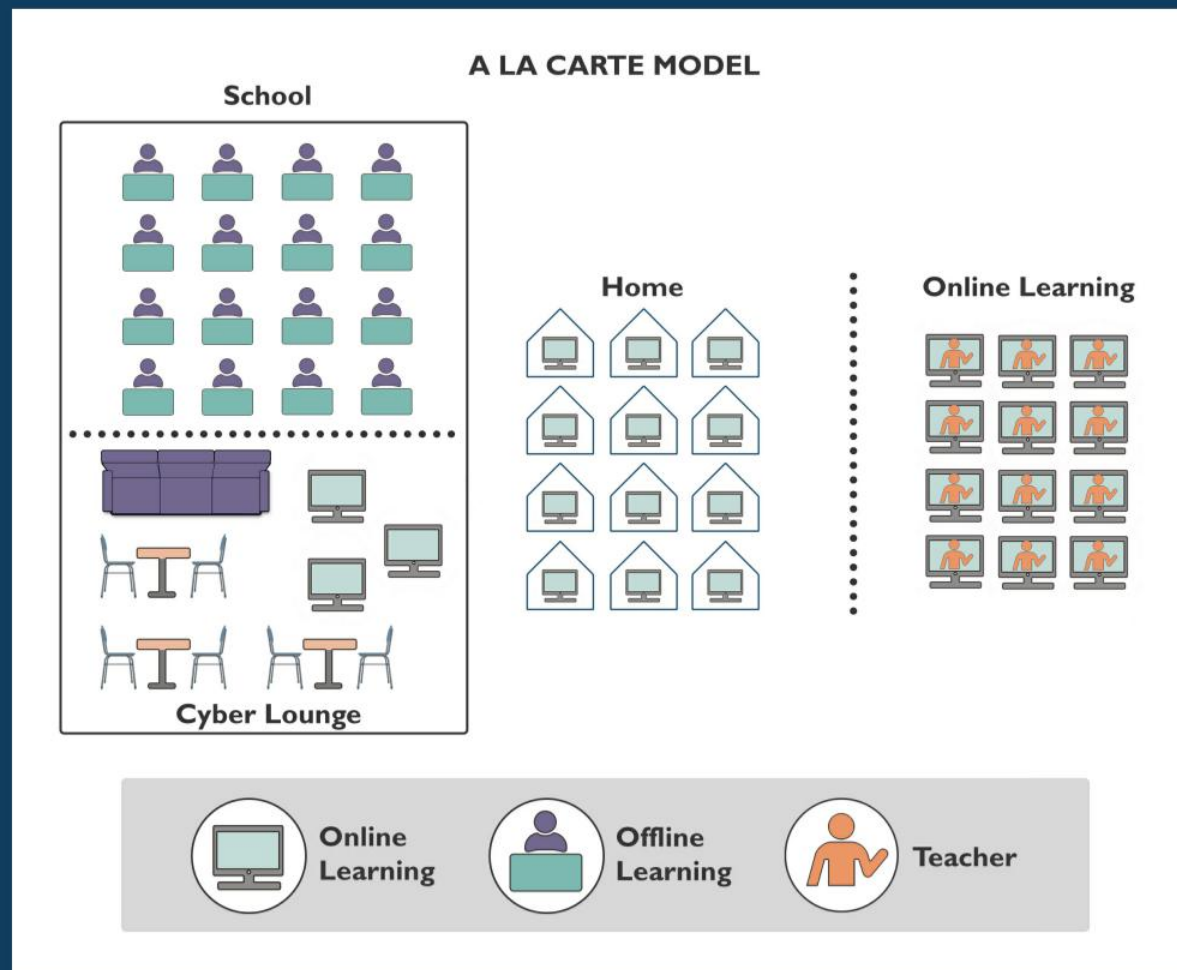
Flex Model

Online instruction is the foundation but can also direct students to offline activities. Students have an individualized schedule among different learning modalities.



A La Carte Model

One or more courses completely online with an online teacher - either onsite or offsite. Students still have brick-and-mortar education experiences.

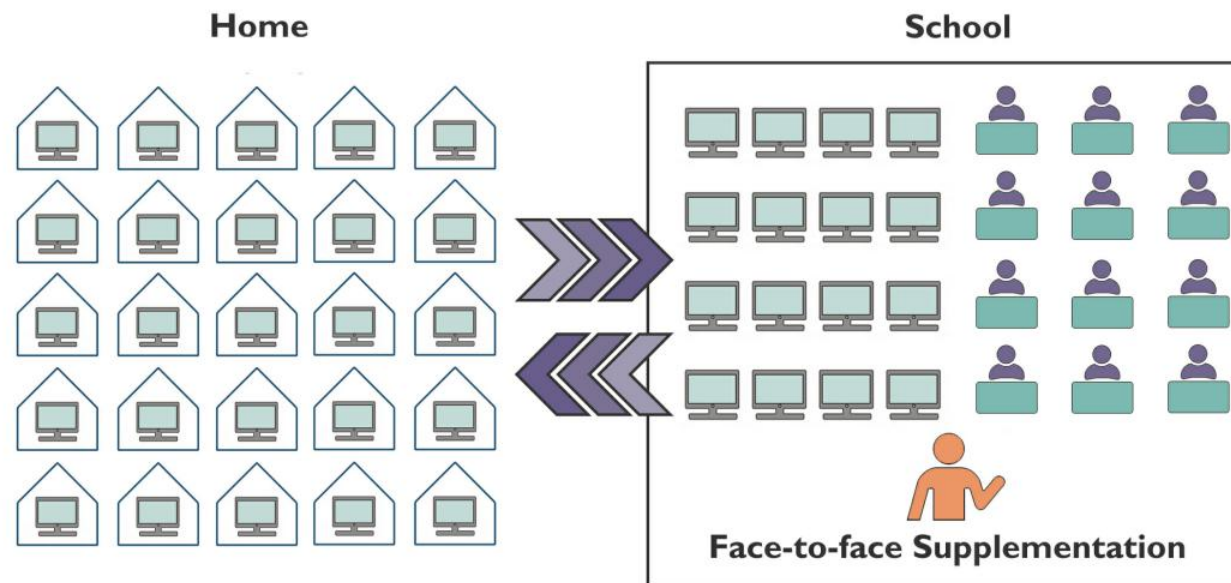


Enriched Virtual Model

Entire school experience - meaning each course - has students divide time between brick-and mortar coupled with online delivery of content and instruction.



ENRICHED VIRTUAL MODEL



Online
Learning



Offline
Learning



Teacher